

SOUTH PARK LOOP PATHWAY CONNECTOR PROJECT

ADDENDUM NO. 1

May 27, 2016

NOTICE TO BIDDERS

This ADDENDUM shall be acknowledged both in the space provided below on this ADDENDUM and on the BID FORM. Failure of any Bidder to properly acknowledge receipt of this Addendum both on this ADDENDUM and on the BID FORM may result in REJECTION OF THE BID.

This Addendum shall be attached to the Contract Documents and shall form a part thereof. The following changes, additions and/or deletions shall be made in the Specifications, Contract Documents and/or Drawings.

.....

GENERAL

1. The Rest Area Pavers shall be constructed in a basket weave pattern.
2. There are three Rectangular Rapid Flashing Beacon (RRFB) installations required. However, one complete RRFB installation includes a pair (one for each side of the road) of the assemblies shown in detail 6/2.3.
3. The color for the Segmented Masonry Unit Retaining Wall blocks shall be tan/light brown, and the blocks for the Concrete Segmental Retaining Wall shall be grey.
4. Post and rail timbers for Pedestrian Rails shall be treated per Section 817 of the WSSRBC.
5. Pedestrian Rails to be installed adjacent to Segmented Masonry Unit Retaining Walls shall be measured and paid as Masonry Unit Wall Pedestrian Rails and Pedestrian Rails installed adjacent to the Concrete Segmental Retaining Wall shall be measured and paid as Concrete Wall Pedestrian Rail. New bid items for each have been included in the attached revised Bid Schedule.
6. Certain culverts and flared ends, as indicated in the attached revised Bid Schedule will be furnished by the Owner and installed by the Contractor. All other culverts and flared ends will be both furnished and installed by the Contractor.
7. The 13x20 pipe arch noted in the plans is revised to be 15x21 pipe arch and the 20x36 pipe arch is revised to be 24x35 pipe arch.
8. Bid Items for Signs and Sign posts have been separated for pathway and for roadway signs and posts. Refer to the attached revised Bid Schedule. Sign pay items include furnishing and installing signs with all required hardware.
9. Sign Posts for pathway signs shall be nominal 4x4 wolmanized timbers. Sign Posts for Roadway signs shall meet WSSRBC requirements.
10. Crushed base furnished for leveling pads for retaining walls shall not be measured separately for payment but shall be considered subsidiary to the retaining wall bid item to which it pertains.

CONTRACT DOCUMENTS

- 1. Replace Contract Documents, Division C-410, Pages 4-5, Bid Form with the attached.
- 2. Division C-520, Page 5, Article 9, 9.01.A.9, add the following:
 - “ c. Insurance Certificate.
 - d. Notice of Award.
 - e. Workers Compensation Certificate.
 - f. Schedule of Rates.
 - g. List of Subcontractors and Suppliers.”
- 3. Division C-800, Page 3, Article 6, replace SC 6.03.K.6. with the following:
 - “Additional Insureds: Teton County and Nelson Engineering”
- 4. Division C-800, Page 4, replace SC 7.06.A., second sentence, with the following:
 - “Contractor shall not award Work to Subcontractor(s) in excess of 30% of the Contract Price without prior written approval of Owner.”

SPECIFICATIONS

- 1. Section 01000 Special Provisions, Page 6, Section 02210, subsection 2.06: the Structural Fill specification for percent passing the No. 200 sieve is revised to be 0-12 (not 0-35).
- 2. Section 01000 Special Provisions, Page 10, Section 02725, replace 4.02.A with the following:
 - “Culverts – Payment shall constitute full compensation for all culvert, materials, excavation, bedding, backfill, coupling bands, equipment, tools, and labor for all work and incidentals necessary to complete this item.”
- 3. Section 01000 Special Provisions, Page 15, Section 02900, replace 3.01.B with the following:
 - “Apply seed by broadcast method, rake seed into the topsoil, and then apply hydromulch, in lieu of hydroseeding.”

DRAWINGS

- 1. Replace Drawings 2.0 and 2.2 with the attached. Revisions are noted on the Drawings.

Sincerely,



Dave Dufault, PE
Project Manager

BIDDER ACKNOWLEDGMENT

DATE

SOUTH PARK LOOP CONNECTOR PATHWAY PROJECT
Bid Schedule

Item No.	Item Description	Unit	Est. Quantity	Unit Price	Total Price
2000.1	Mobilization	LS	1		
2005.1	Force Account	FA	1	\$ 50,000.00	\$ 50,000.00
2005.2	Force Account - Utility Adjustments	FA	1	\$ 15,000.00	\$ 15,000.00
2005.3	Force Account - Clearing and Grubbing	FA	1	\$ 60,000.00	\$ 60,000.00
2020.1	Temporary Traffic Control	LS	1		
2030.1	Contractor Stormwater Control	LS	1		
2030.2	Silt Fence	FT	420		
2030.3	Sediment Logs	FT	100		
2050.1	Removal and Disposal of Signs	EA	4		
2050.2	Removal and Disposal of Fence	LF	100		
2075.1	Removal and Disposal of Pavement	SYD	340		
2210.1	Unclassified Excavation Above Subgrade	LS	1		
2210.2	Unclassified Excavation Below Subgrade	CY	500		
2210.3	Imported Borrow Excavation	TON	3600		
2231.1	Pitrun Subbase	TON	8300		
2231.2	Crushed Base	TON	2630		
2280.1	Topsoil	SY	11500		
2512.1	Plant Mix Bituminous Pavement	TON	1450		
2725.1	10" CMP	LF	34		
2725.2	12" CMP	LF	10		
2725.3	18" CMP	LF	14		
2725.4	24" CMP	LF	32		
2725.5	36" CMP	LF	10		
2725.6	15" X 21" PIPE ARCH CMP (Owner Furnished)	LF	10		
2725.7	24" X 35" PIPE ARCH CMP (Owner Furnished)	LF	10		
2725.8	10" Flared End	EA	1		
2725.9	12" Flared End	EA	1		
2725.10	18" Flared End	EA	1		
2725.11	24" Flared End	EA	5		
2725.12	36" Flared End	EA	1		
2725.13	15"x21" Pipe Arch Flared End (Owner Furnished)	EA	1		
2725.14	24"x35" Pipe Arch Flared End (Owner Furnished)	EA	1		
2776.1	Concrete Flatwork	SF	670		
2805.1	Remove and Reset Signs	EA	10		
2805.2	Remove and Reset Mailbox	LS	1		
2805.3	Remove and Reset Fence	FA	1	\$ 10,000.00	\$ 10,000.00
2810.1	Pathway Sign Posts, Wolmanized Wood 4x4 in	EA	15		
2810.2	Pathway Sign Panels, Aluminum	SF	36		
2810.3	Roadway Sign Posts, Wood 4x4 in	EA	20		
2810.4	Roadway Sign Panels, Aluminum	SF	30		
2820.1	Pavement Markings	LS	1		
2834.1	Segmented Masonry Unit Retaining Wall	SF	3150		
2834.2	Structural Fill	TON	1500		
2835.1	Concrete Segmental Retaining Wall	SF	1140		
2895.1	Geotextile Fabric - Separation and Stabilization - Non-Woven	SY	5000		
2900.1	Landscaping	LS	1		
2900.2	Erosion Control Blanket	SY	3000		
2900.3	Irrigation System	FA	1	\$ 20,000.00	\$ 20,000.00
2900.4	3" Cottonwood	EA	50		
2900.5	3" Aspen	EA	14		
2900.6	2" Mountain Maple	EA	12		
2900.7	Willow Transplanting	FA	1	\$5,000.00	\$5,000.00
2900.8	Root Barrier	LF	1250		

Addendum No. 1

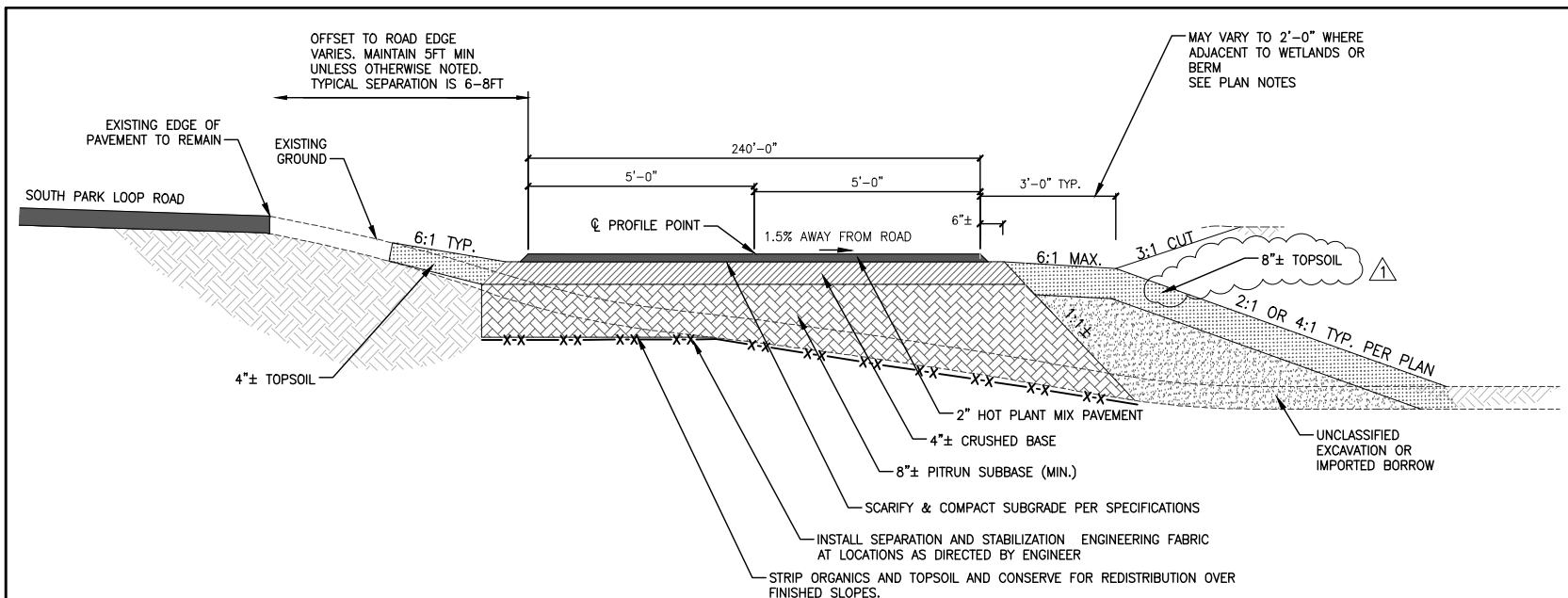
SOUTH PARK LOOP CONNECTOR PATHWAY PROJECT
Bid Schedule, continued

Item No.	Item Description	Unit	Est. Quantity	Unit Price	Total Price
2920.1	Rest Area Pavers	SF	350		
2950.1	Rectangular Rapid Flashing Beacons	EA	3		
607.1	Masonry Unit Wall Pedestrian Rail	LF	780		
607.2	Concrete Wall Pedestrian Rail	LF	320		
BASE BID TOTAL:					
				Dollars	\$
(use words)				(use figures)	

The apparent low bidder will be determined by comparison of the Base Bid Total above.

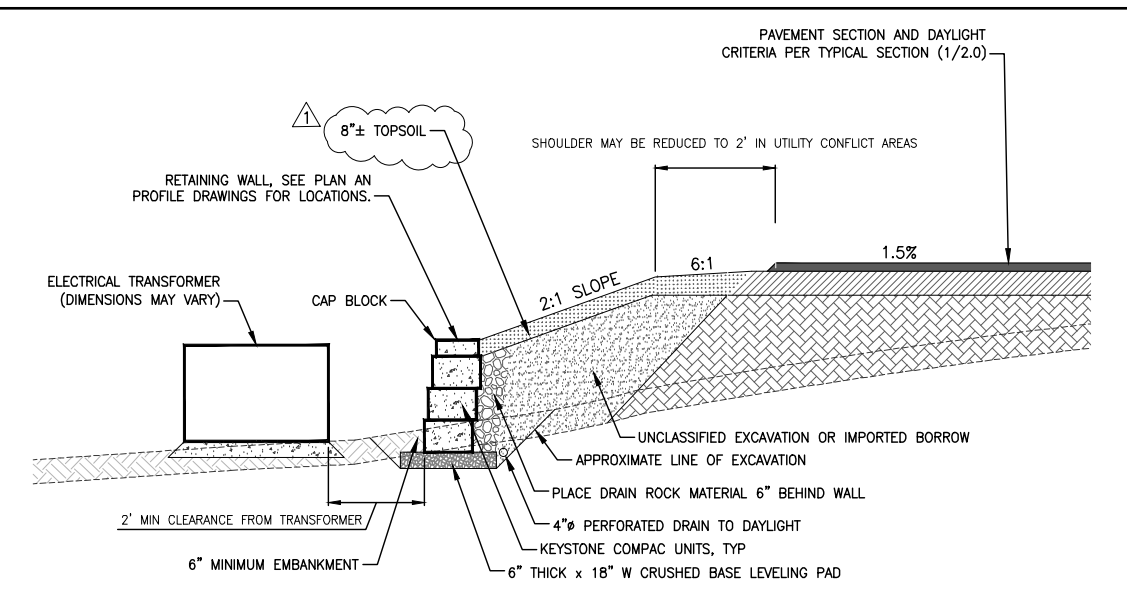
Additive Bid Alternate A					
Item No.	Item Description	Unit	Est. Quantity	Unit Price	Total Price
2231.1	Crushed Base	TON	240		
2280.1	Topsoil	SY	450		
2512.1	Plant Mix Bituminous Pavement	TON	120		
2900.1	Landscaping	LS	1		
TOTAL PRICE BID ALTERNATE A:					
				Dollars	\$
(use words)				(use figures)	

Addendum No. 1



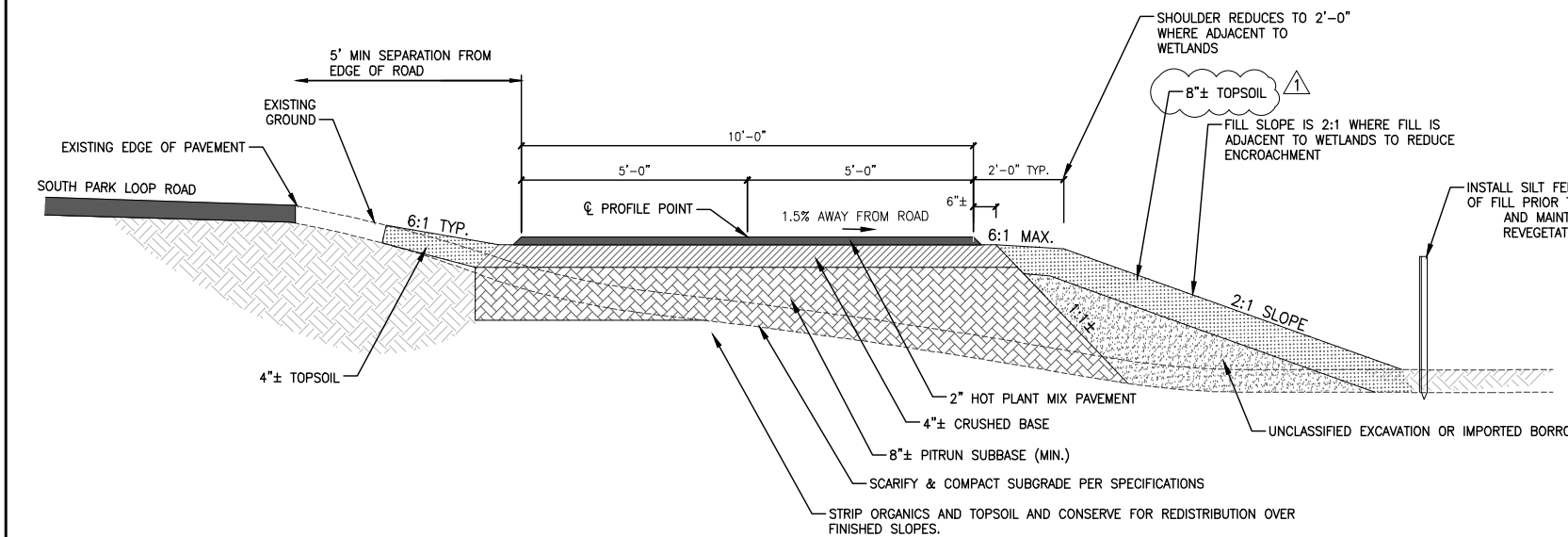
1 TYPICAL SECTION: CROSS SLOPE LEFT/RIGHT CUT/FILL CONDITION
2.0
1/2" = 1'-0"

NOTE: REFER TO 6.2 FOR REQUIREMENTS FOR ROOT BARRIERS WITHIN THE EMBANKMENTS

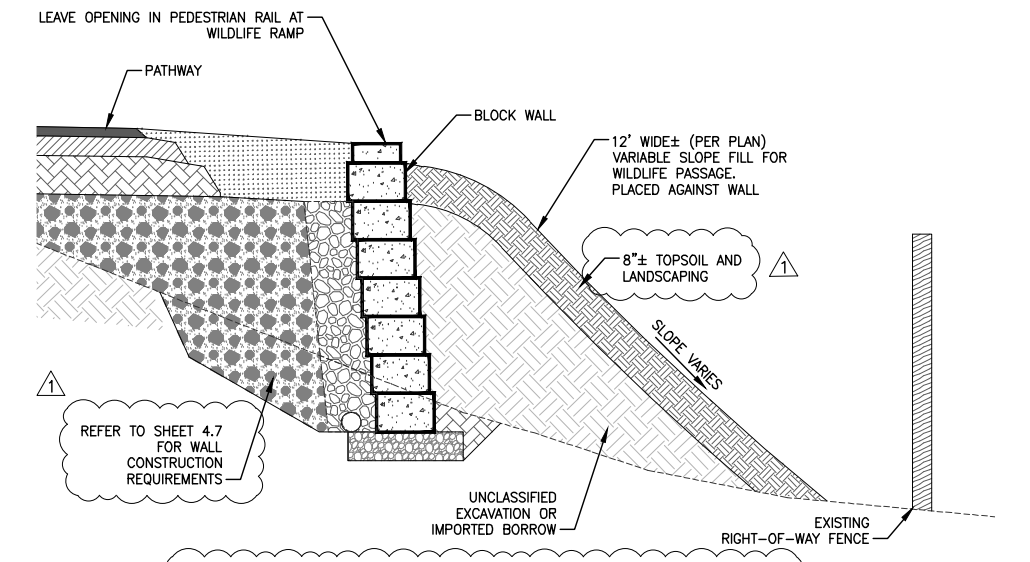


4 TYPICAL SECTION: SEGMENTED MASONRY UNIT RETAINING WALL DETAIL
2.0

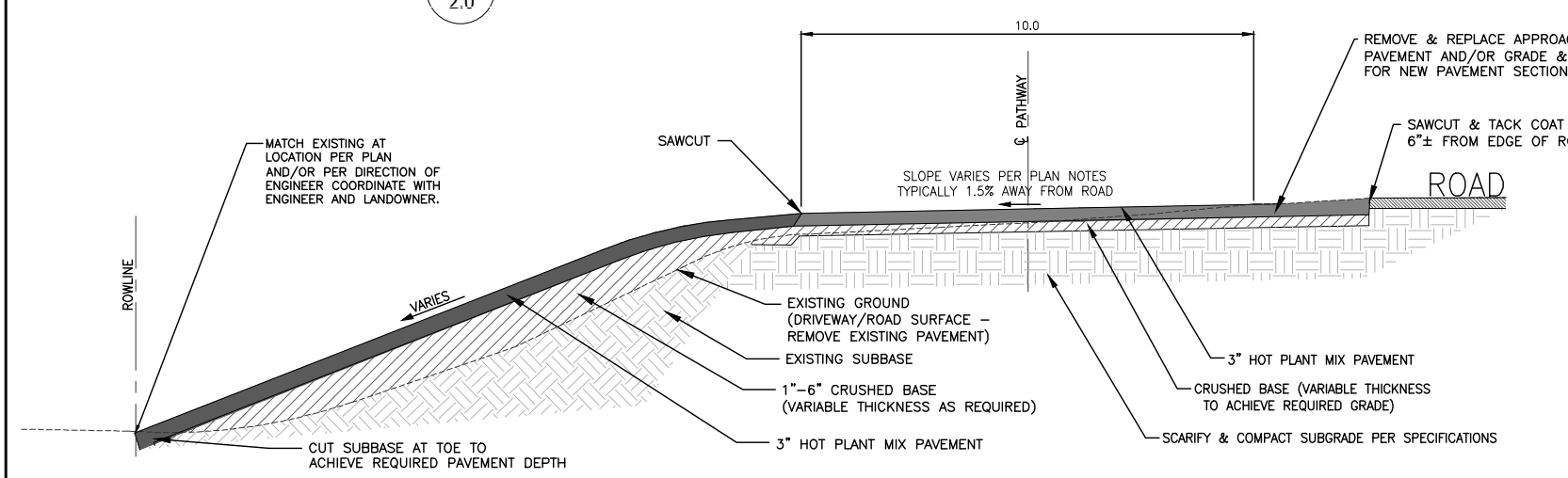
NOTE: RETAINING WALL SHOWN APPLICABLE TO WALLS STA. 21+80± TO STA. 23+80± SEE 4.# DRAWINGS FOR RETAINING WALLS A, B, AND C



2 PATHWAY SECTION: ADJACENT TO WETLAND
2.0



5 TYPICAL SECTION: WILDLIFE RAMP
2.0



3 PATHWAY SECTION: APPROACH PAVING DETAIL
2.0

STATION RANGE	CYDS								REMARKS
	UNCLASSIFIED EXCAVATION		EMBANKMENT						
	TOPSOIL STRIP	CUT MATERIAL	UNCLASSIFIED EX FILL	PITRUN SUBBASE	IMPORTED BORROW	STRUCTURAL FILL	PLACED TOPSOIL (SY)	TOPSOIL CY	
1+15 - 14+40	417	134	134	600	257	0	1618	260	Project Start to Wall A
14+40 - 20+20	152	33	0	145	0	698	444	42	Retaining Walls A & B
20+20 - 36+80	942	115	148	784	345	0	2048	321	Wall B to South Park Ranch Rd
37+20 - 74+80	1128	178	178	1897	839	0	4298	701	South Park Ranch Rd to South X-ing
75+20 - 81+20	162	36	36	278	81	0	546	98	South X-ing to Wall C
81+20 - 83+00	50	10	0	45	0	148	195	18	Retaining Wall C
83+00 - 100+15	521	120	130	788	319	0	1961	369	Wall C to S Cortland Drive
TOTALS	3372	625	625	4537	1840	846	11110	1810	

Bid Qtys: 8300 TONS 3600 TONS 1500 TONS 11500 (SY)

6 EARTHWORK QUANTITIES
2.0

QUANTITIES ARE ESTIMATES ONLY, DO NOT INCLUDE COMPACTION OR SHRINKAGE FACTORS, AND ARE NOT GUARANTEED TO REPRESENT EXACT QUANTITIES REQUIRED DURING CONSTRUCTION

S:\p\p\BIB\BIB-05-05.dwg - South Park Loop Pathway Connector\Drawings\DETAILS & SECTIONS.dwg (TYPICAL SECTIONS) - May 27, 2016 01:59:27 pm PLOTTED BY: aubak

NELSON ENGINEERING
P.O. BOX 1599, JACKSON WYOMING (307) 733-2087

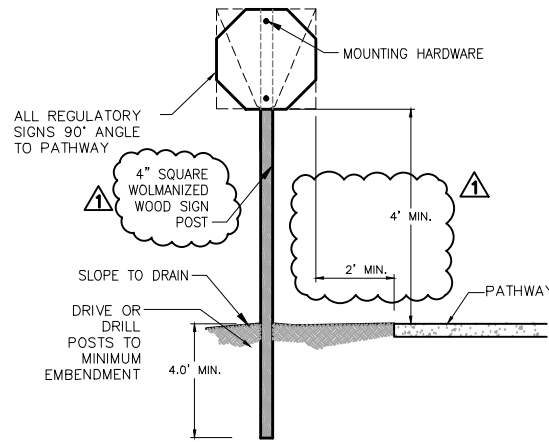
DATE	5/15/2016	REV.	5/27/16		
SURVEYED	NE	ENGINEERED	DD	DRAWN	DB
CHECKED	DD	APPROVED	DD		

DRAWING TITLE
TYPICAL SECTIONS

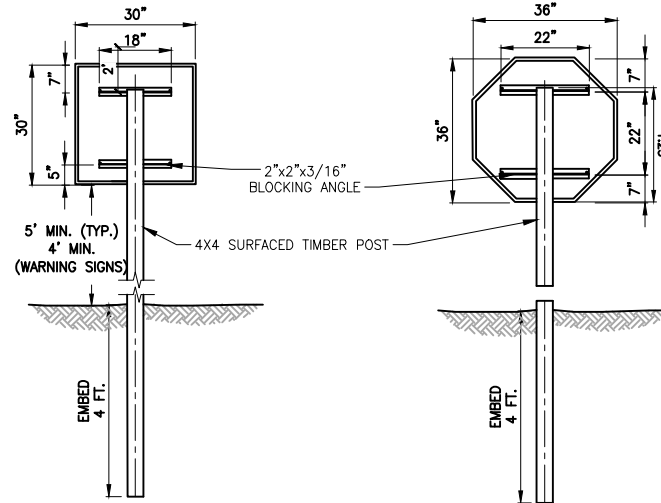
JOB TITLE
SOUTH PARK LOOP CONNECTOR PATHWAY PROJECT
TETON COUNTY, WY

DRAWING NO
2.0

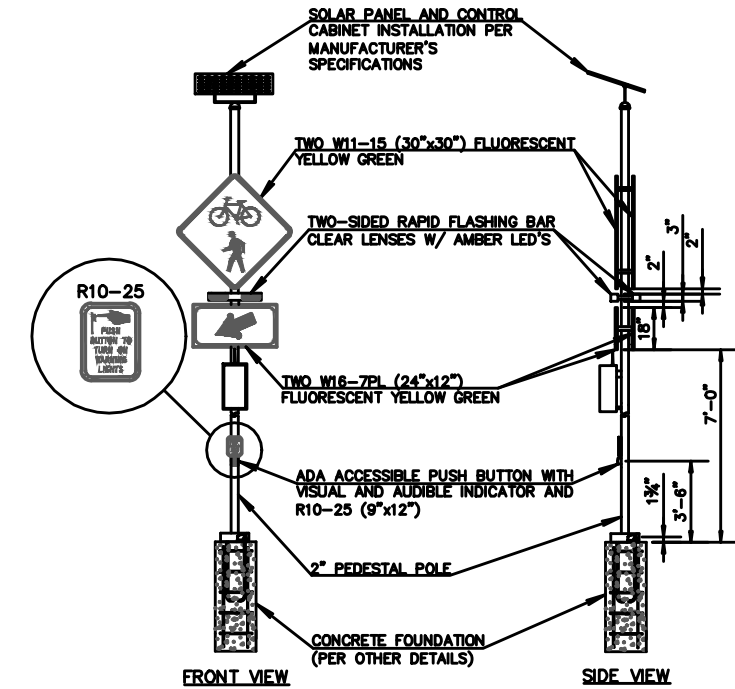
JOB NO
15-257-02



1 PATHWAY SIGN DETAIL
2.3 N.T.S.



4 ROADWAY SIGN DETAILS
2.3 N.T.S.



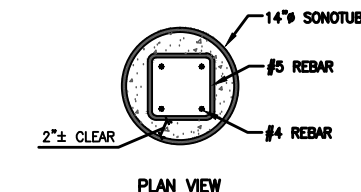
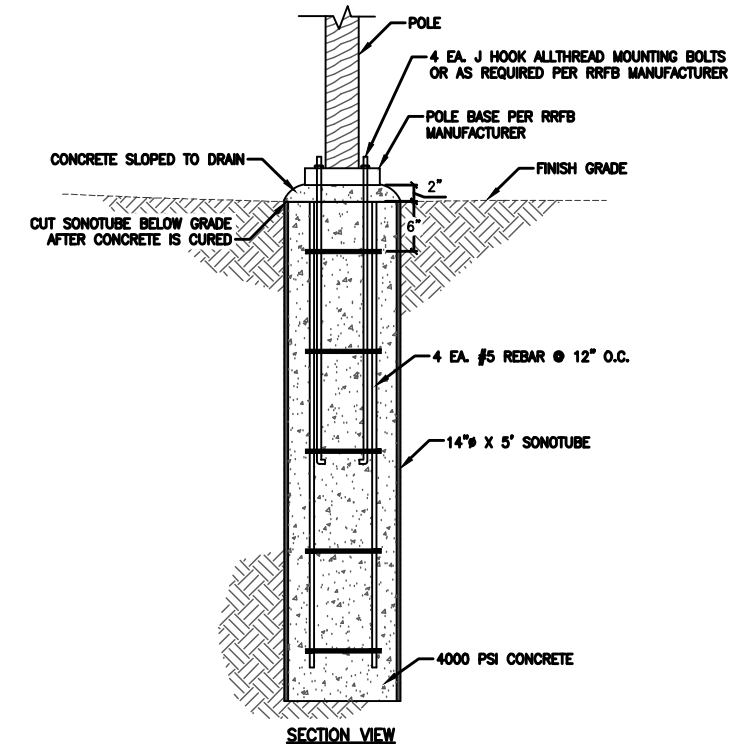
6 RECTANGULAR RAPID FLASHING BEACON DETAIL (RRFB)
2.3 N.T.S.

STATION	SIDE	SIGN	REMARKS	RELATIVE LOCATION/FEATURE
1+70	RT	WAYFINDER SIGN	REMOVE EXISTING SIGN & RESET	SP CEMETERY ROAD
2+80±	RT	STOP & NO MOTOR VEHICLES	OPPOSE SIGNS ON SAME POST	NORTHERN CROSSING SP LOOP RD
3+30±	LT	STOP & NO MOTOR VEHICLES	OPPOSE SIGNS ON SAME POST	NORTHERN CROSSING SP LOOP RD
4+40±	RT	"LOOK"	FACING WEST	CROSSING N GRAND TETON CIRCLE
4+60±	LT	"LOOK"	FACING EAST	CROSSING N GRAND TETON CIRCLE
36+50±	RT	"LOOK"	FACING NORTH	SP RANCH RD CROSSING
37+10±	LT	"LOOK"	FACING SOUTH	SP RANCH RD CROSSING
44+60±	RT	"LOOK"	FACING NORTH	WILSON RD CROSSING
45+10±	LT	"LOOK"	FACING SOUTH	WILSON RD CROSSING
74+75±	RT	STOP & NO MOTOR VEHICLES	OPPOSE SIGNS ON SAME POST	SOUTHERN CROSSING SP LOOP RD
75+20±	LT	STOP & NO MOTOR VEHICLES	OPPOSE SIGNS ON SAME POST	SOUTHERN CROSSING SP LOOP RD
100+00±	RT	"LOOK"	FACING NORTH	CROSSING CORTLAND DRIVE
100+75±	LT	"LOOK"	FACING SOUTH	CROSSING CORTLAND DRIVE
105+50±	RT	STOP (R1-1)	SET AT EOP FACING NORTH ON OTHER SIDE OF SP LOOP RD (SEE SHEET 5.7)	CROSSING: MELODY RANCH SPUR
105+60±	LT	STOP (R1-1)	SET AT EOP FACING SOUTH (SEE SHEET 5.7)	CROSSING: MELODY RANCH SPUR

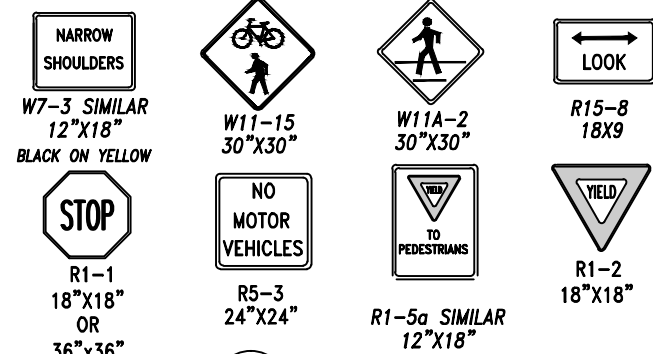
2 PATHWAY SIGN SCHEDULE
2.3

STA	Description	SIGN	REMARKS
2+20±	large sign adjacent	SOUTH PARK CEMETERY	Ensure Toe of Pathway fill does not encroach
2+50±	SET NEW SIGN	STOP (R1-1)	SET FACING "UP" SP CEMETERY ROAD
3+20±	SET NEW SIGNS	"BIKES CROSSING HIGHWAY 200 FT" "CAUTION AHEAD"	SET 200' SOUTH OF EOP, FACING SOUTH
3+00±	SET NEW SIGNS	"BIKES CROSSING HIGHWAY 200 FT" "CAUTION AHEAD"	SET 200' NORTH OF EOP, FACING NORTH
3+00±	SET NEW SIGNS	W11-15 & RRFB	SET 2' NORTH OF EOP, FACING NORTH
3+20±	SET NEW SIGNS	W11-15 & RRFB	SET 2' SOUTH OF EOP, FACING SOUTH
4+28±	sign post within grading extents	STREET NAME & STOP SIGN	REMOVE & RESET STREET SIGN. RELOCATE STOP SIGN TO OPPOSITE SIDE OF DITCH (SEE SHEET 5.1)
7+11±	sign post in middle of path	BIKES ENTERING HIGHWAY 500 FT	REMOVE
12+09±	sign post in middle of path	BIKES ENTERING HIGHWAY 1000 FT	REMOVE
16+50±	sign post in middle of path	STREET NAME & STOP SIGN	REMOVE & RESET STREET SIGN. RELOCATE STOP SIGN TO OPPOSITE SIDE OF DITCH (SEE SHEET 5.2)
21+40±	sign post in middle of path	ADDRESS MARKER (BY OWNER)	REMOVE & RESET
36+80	SET NEW SIGN	W11-15	SET 5' FROM EOP, FACING NORTH (SEE SHEET 5.3)
37+20±	SET NEW SIGN	W11-15	SET 5' SOUTH OF EOP, FACING SOUTH (SEE SHEET 5.3)
38+10±	sign post within grading extents	SOUTH PARK RANCH ROAD STREET SIGN	REMOVE & RESET
44+58±	sign post in middle of path	WILSON ROAD STREET SIGN	REMOVE & RESET
44+60±	sign post within grading extents	STOP (R1-1)	REMOVE & RESET
44+80±	SET NEW SIGN	W11-15	SET 5' EAST OF EOP, FACING EAST (SEE SHEET 5.4)
45+10±	SET NEW SIGN	W11-15	SET 5' WEST OF EOP, FACING SOUTHWEST (SEE SHEET 5.4)
74+80±	SET NEW SIGNS	"BIKES CROSSING HIGHWAY 200 FT" "CAUTION AHEAD"	SET 200' EAST OF EOP, FACING EAST
74+80±	SET NEW SIGNS	W11-15 & RRFB	SET 2' EAST OF EOP, FACING EAST
75+00±	SET NEW SIGNS	"BIKES CROSSING HIGHWAY 200 FT" "CAUTION AHEAD"	SET 200' WEST OF EOP, FACING WEST
75+00±	SET NEW SIGNS	W11-15 & RRFB	SET 2' WEST OF EOP, FACING WEST
98+98±	sign post in middle of path	MUNGER VIEW PARK SIGN	REMOVE & RESET
100+00±	sign post in middle of path	CORTLAND DRIVE STREET NAME SIGN	REMOVE & RESET
105+50±	set new signal	RRFB	SET AT EOP ON OTHER SIDE OF SP LOOP RD (SEE SHEET 5.7)
105+60±	set new signal	RRFB	SET AT EOP (SEE SHEET 5.7)

5 ROAD SIGN SCHEDULE
2.3



7 RRFB CONCRETE FOUNDATION DETAIL
2.3



3 SIGNS
2.3 N.T.S.

REV.	DATE	BY	CHKD	APP'D
1	5/19/2016	NE	DD	DD
2	5/27/16	NE	DD	DD

NELSON ENGINEERING
P.O. BOX 1599, JACKSON WYOMING (307) 783-2087

DRAWING TITLE
SIGNAGE DETAILS & SCHEDULE

JOB TITLE
SOUTH PARK LOOP
CONNECTOR PATHWAY PROJECT
TETON COUNTY, WY

DRAWING NO
2.2
JOB NO
15-887-08